

# **Standard**

for the judging of all cavy breeds as  
recognised by the European Association

# **Standard**

für die Bewertung der vom Europaverband  
anerkannten Cavia Rassen

---

2nd. Edition - 2. Ausgabe

English version

---

**European Association of Poultry, Pigeon, Cage  
Bird, Rabbit and Cavy Breeders**

**Europäischer Verband für Geflügel-, Tauben-,  
Vogel-, Kaninchen- und Caviazucht**

**Association Européenne pour l'Élevage des  
Volailles, des Pigeons, d'Oiseaux, des Lapins et des  
Cobayes**

# The Standards Committee: Die Standard Kommission:

## President / Präsident :

Petr Tejml (Czech Republic)

## Secretary / Sekretär:

Sandra Vandenbussche (Belgium)

## Members / Mitglieder:

Lena Tysk (Sweden)

Jan Schop (The Netherlands)

Melanie Polinelli (Switzerland)

Eva Bednárová (Slovakia)

Xx (vacant)

---

© All rights reserved – Alle Rechte vorbehalten – Tous Droits réservés

**The European Standard for Cavies can only be used for European shows, European Breedspecific shows or official shows organised by all affiliated memberclubs.**

For more information in regards to affiliated members:

<http://www.entente-ee.com/sections/cavy/members/>

---

Edited, Typeset & Design: The Standards Committee

Printed and published by: European Association Cavy Section

Photos: Evelyne van Vliet, Lyndon Nowell, Jan Schop, Tanja Erdel, Petr Tejml, Jens Lindgren and Amy Heale.

# Foreword

This standard is brought to you by the European Standard Committee Cavy section. In front of you lies the 2<sup>nd</sup> edition of the European Standard for Cavies. In 2014 the ESKC decided it was time to fully review the standard for cavies. 2016 was the year it was finished, but as we all know a standard is a living document. Our fancy is growing and changing by the minutes and new colours and/or breeds are found and created up till date. With help and input of many affiliated countries and members we could not have done this job.

We hope this standard gives you a proper direction and guidance for your judging at shows.

At present, popularity for keeping cavies for exhibitions is growing, literally all over the world, and liking for them, especially in Europe, is enormous. This also brings the demand for information and especially for scientific literature. A group of experienced experts of the standard committee has worked hard to update the European Standard for Cavies, which is currently used not only in European exhibition assessments but is increasingly popular at international and national exhibitions. In Austria, it is even already adopted as a national standard.

The European Standard for Cavies covers the requirements of EE member states and is a kind of compromise of national standards. Breeds and colours are included in the standard automatically after recognition by at least three affiliated countries.

I believe that the European Standard for Cavies will continue to be considered a good publication, and its popularity will continue to grow, because cavy exhibitions have become a regular part of our lives as cavy fanciers.

The Standards Committee, Sparte Cavias



**Contents** **4**

---

**General Description of Faults and Disqualifications** **7**

---

**Smooth Coated Varieties** **11**

---

**Agoutis** **12**

Golden ..... 13

Grey ..... 14

Lemon ..... 15

Silver ..... 16

Orange ..... 17

Cream ..... 18

Cinnamon ..... 19

Blue/white ..... 20

**Solid Agoutis** **21**

Golden ..... 22

Grey ..... 23

Lemon ..... 24

Silver ..... 25

Orange ..... 26

Cream ..... 27

Cinnamon ..... 28

Blue/white ..... 29

**Argentés** **30**

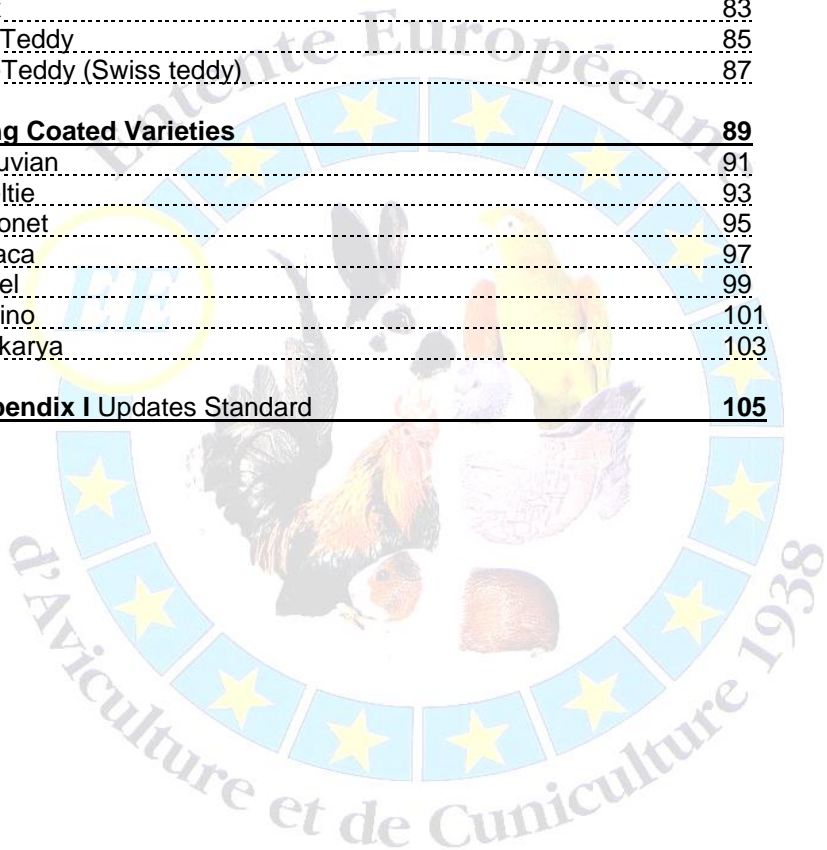
Argentés ..... 31

Solid Argentés ..... 32

Table 1 with (Solid) Argente colours ..... 33

<b>Selfs</b>	<b>34</b>
Black	35
Blue	36
Slate	37
Lilac	38
Chocolate	39
Coffee	40
Beige	41
Red	42
Golden Dark Eyed (DE)	43
Golden Pink Eyed (PE)	44
Saffron	45
Buff	46
Cream Pink Eyed (DE)	47
Cream Dark Eyed (PE)	48
White Pink Eyed (DE)	49
White Dark Eyed (PE)	50
<b>Marked</b>	<b>51</b>
Brindle	52
Tortoiseshell	53
Tortoise and White	54
Harlequin	55
Magpie	56
Bicolour	57
Tricolour	58
Dutch	59
Himalayan	61
Californian	63
Dalmation	63
Roan	65
Dapple	66
Tan	67
Lux	69
Otter	70
Fox	72

<b>Rough Coated Varieties</b>	<b>74</b>
Satin	75
Crested Satin	77
Crested	79
Abyssinian	81
Rex	83
US-Teddy	85
CH-Teddy (Swiss teddy)	87
<b>Long Coated Varieties</b>	<b>89</b>
Peruvian	91
Sheltie	93
Coronet	95
Alpaca	97
Texel	99
Merino	101
Lunkarya	103
<b>Appendix I Updates Standard</b>	<b>105</b>





# European Standard for Purebred Cavies

## General description

### The Standard

1. Type and Shape	20
2. Head, Eyes and Ears	10
3. Breedspecific	10
4. Breedspecific	15
5. Breedspecific	15
6. Breedspecific	15
7. Condition and Presentation	<u>15</u>
	100

### Classes

C-Class:	Cavies from 3 to 6 months old
B-Class:	Cavies from 6 to 9 months old
A-Class:	Cavies 9 months and older

### Awards

98 – 100 points	V (vorzüglich)	= Outstanding
95 – 97,5 points	HV (hervorragend)	= Excellent
92 – 94,5 points	SG (sehr gut)	= Very good
90 – 91,5 points	G (gut)	= Good
Below 90 points	N.B. (nicht befriedigend)	= Insufficient
0 points	Dis (disqualification)	= Dis (disqualified)



# 1. Type and Shape

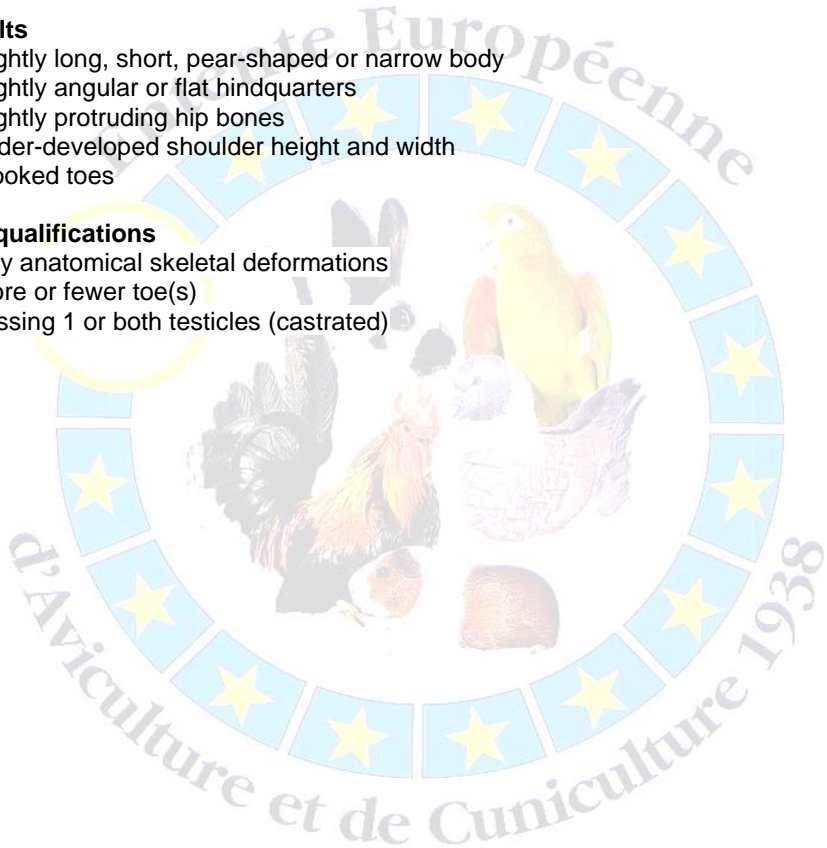
An exhibition cavy has to give off a strong and muscular impression. This is especially expressed by a well developed, broad head and a deep, broad and well muscled shoulder. A broad, well muscled chest and rib cage underlines the body shape which has to be short and cobby. The shoulder gradually dips into the broad, short back, levelling briefly and dipping once more into the well-rounded hindquarters. The body is carried by short, straight and strong legs. The front feet have four toes and the back feet three.

## Faults

- slightly long, short, pear-shaped or narrow body
- slightly angular or flat hindquarters
- slightly protruding hip bones
- under-developed shoulder height and width
- crooked toes

## Disqualifications

- Any anatomical skeletal deformations
- More or fewer toe(s)
- Missing 1 or both testicles (castrated)





## 2. Head, Eyes and Ears

The powerful head has a good width between the eyes and ears, a broad roman nose with a good width of muzzle, rounded at the nostrils and well developed cheeks. The head should be in correct proportion to the body. The ears are of a firm fleshy texture, rose-petal shaped, large and drooping. The eyes are large, round and bold, brimming with vitality. The upper and lower jaws consist of two incisors and four molars on either side.

### Faults

- pointed, narrow, short or unproportional head and/or muzzle
- drooping eyelids, sunken, almond-shaped and/or small eyes
- small or damaged ears and/or bad ear carriage
- one folded or hemmed ear

### Disqualifications

- any anatomical skeletal head deformations
- deformations of the eyes (fatty eye or eye spots)
- deformations of the eyelids (entropion)
- two folded or hemmed ears
- missing or broken incisors



## 7. Condition and Presentation

The cavy should be of good size and carry plenty of firm flesh with a clean coat. The eyes should be bright and radiating vitality. The nails must be of correct length to be parallel to the ground, if necessary they should be trimmed. The coat, the pads, the nails as well as the inside and outside of the ears must be clean.

### Faults

- gross(fat), flabby or thin
- dirty or stained (coat)
- crooked nails

### Disqualifications

- obese or extremely thin
- cysts underneath the skin
- diseased, wounded or pregnant cavies
- severely dirty, greasy and stained overall
- artificially enhanced coat
- infestation of mites and/or running lice
- missing toenail(s)



# Smooth Coated Varieties

## Introduction

The Smooth coated cavies can be divided in to the follow groups:

- Agoutis
- Solid Agoutis
- Argentes
- Sells
- Marked

## The Standard

1. Type and Shape	20
2. Head, Eyes and Ears	10
3. Coat	10
4. Breedspecific	15
5. Breedspecific	15
6. Breedspecific	15
7. Condition and Presentation	15
	<u>100</u>

## 3. Coat

The coat is dense, short, flat and glossy and consists of fine, silky hairs. The lie of the coat is horizontal and runs from the head towards the hindquarters. The coat is around 2½ cm long. The coat has to be free of rosettes and ruffles. The ideal coat of an exhibit looks even with a glossy sheen and is not in moult. A cavy is in moult when there are lots of loose hairs; a small amount of loose hairs are acceptable.

## Faults

- slightly matt, thin, open and/or coarse coat (including belly)
- slightly long or short coat
- slightly skirting behind front legs

## Disqualifications

- too thin or open coat
- too long or short length of the coat
- severe moult or bald patches in coat
- quiffs and severe skirting in coat

*In addition to the above, all faults and disqualifications as mentioned under the General Description apply.*

# Agoutis

## Introduction

The hairs of Agouti cavies show the characteristic colouring of the wild colour.

There are three kinds of hairshaft colouring.

1. Undercolour – Topcolour – Undercolour
2. Undercolour – Topcolour
3. Undercolour

The ticking is created through the even spread of these three differently coloured hairs. It is important that the ticking on the head around the eyes, the chest and on the feet is also as even as on the body. The belly strip is made up from hairs that have a narrow band of undercolour topped with topcolour. The belly strip needs to have a well defined demarcation line and be as narrow as possible.

## The Standard

1. Type and Shape	20
2. Head, Eyes and Ears	10
3. Coat	10
4. Topcolour and ticking	15
5. Bellycolour and strip	15
6. Undercolour	15
7. Condition and Presentation	15
	<hr/>
	100

## Faults

- slight deviation of colour under positions 4, 5 and 6
- slightly wide bellystrip
- slightly long in ticking or uneven ticking
- slightly dark or light on chest, legs and feet
- slight eyecircles
- few odd coloured hairs

## Disqualifications

- severe deviation of colour under positions 4, 5 and 6
- bellystrip too wide
- severely long in ticking or uneven ticking
- severely dark or light on chest, legs and feet
- too large eyecircles
- too many odd coloured hairs

*In addition to the above, all faults and disqualifications as mentioned under the General Description apply.*

# Golden-agouti



## 4. Topcolour and ticking

The topcolour is to be a rich, warm mahogany colour with even black ticking. The ticking is evenly spread on the body as on the head, around the eyes, the chest and on the feet.

Eyes:	Dark
Ears:	Black
Pads and Toenails:	Black

## 5. Bellycolour and strip

The colour on the belly is slightly matter and without ticking. The belly strip needs to have a well defined demarcation line and be as narrow as possible.

## 6. Undercolour

To be deep black.



## Grey-agouti



### 4. Topcolour and ticking

The topcolour is to be a buff colour with even black ticking. The ticking is evenly spread on the body as on the head, around the eyes, the chest and on the feet.

Eyes:	Dark
Ears:	Black
Pads and Toenails:	Black

### 5. Bellycolour and strip

The colour on the belly is slightly matter and without ticking. The belly strip needs to have a well defined demarcation line and be as narrow as possible.

### 6. Undercolour

To be deep black.



## Lemon-agouti



### 4. Topcolour and ticking

The topcolour is to be a cream colour with even black ticking. The ticking is evenly spread on the body as on the head, around the eyes, the chest and on the feet.

Eyes:	Dark
Ears:	Black
Pads and Toenails:	Black

### 5. Bellycolour and strip

The colour on the belly is slightly matter and without ticking. The belly strip needs to have a well defined demarcation line and be as narrow as possible.

### 6. Undercolour

To be deep black.

# Silver-agouti



## 4. Topcolour and ticking

The topcolour is to be a silver-grey colour with even black ticking. The ticking is evenly spread on the body as on the head, around the eyes, the chest and on the feet.

Eyes:	Dark ruby
Ears:	Black
Pads and Toenails:	Black

## 5. Bellycolour and strip

The colour on the belly is slightly matter and without ticking. The belly strip needs to have a well defined demarcation line and be as narrow as possible.

## 6. Undercolour

To be deep black.

## Orange-agouti



### 4. Topcolour and ticking

The topcolour is to be a rich, golden colour with even chocolate ticking. The ticking is evenly spread on the body as on the head, around the eyes, the chest and on the feet.

Eyes:	Ruby
Ears:	Chocolate
Pads and Toenails:	Chocolate

### 5. Bellycolour and strip

The colour on the belly is slightly matter and without ticking. The belly strip needs to have a well defined demarcation line and be as narrow as possible.

### 6. Undercolour

To be deep chocolate.

## Cream-agouti



### 4. Topcolour and ticking

The topcolour is to be a cream colour with even chocolate ticking. The ticking is evenly spread on the body as on the head, around the eyes, the chest and on the feet.

Eyes:	Ruby
Ears:	Chocolate
Pads and Toenails:	Chocolate

### 5. Bellycolour and strip

The colour on the belly is slightly matter and without ticking. The belly strip needs to have a well defined demarcation line and be as narrow as possible.

### 6. Undercolour

To be deep chocolate.

## Cinnamon-agouti



### 4. Topcolour and ticking

The topcolour is to be a silver-white colour with even cinnamon ticking. The ticking is evenly spread on the body as on the head, around the eyes, the chest and on the feet.

Eyes:	Ruby
Ears:	Chocolate
Pads and Toenails:	Chocolate

### 5. Bellycolour and strip

The colour on the belly is slightly matter and without ticking. The belly strip needs to have a well defined demarcation line and be as narrow as possible.

### 6. Undercolour

To be deep cinnamon, i.e. a milk chocolate colour.



## Blue/white-agouti



### 4. Topcolour and ticking

The topcolour is to be a silver-white colour with even blue ticking. The ticking is evenly spread on the body as on the head, around the eyes, the chest and on the feet.

Eyes:	Dark
Ears:	Dark grey-blue
Pads and Toenails:	Dark grey-blue

### 5. Bellycolour and strip

The colour on the belly is slightly matter and without ticking. The belly strip needs to have a well defined demarcation line and be as narrow as possible.

### 6. Undercolour

To be dark grey-blue shade, similar to graphite.



# Solid Agoutis

## Introduction

Solid Agoutis differ from „normal“ Agoutis in that they do not have a belly strip. They have an evenly ticked belly without a clear demarcation. Invariably Solid Agoutis are usually of a darker colour tone than their „normal“ Agouti counterparts.

There are two kinds of hairshaft colouring.

1. Undercolour – Topcolour - Undercolour
2. Undercolour – Topcolour
3. Undercolour

The ticking is created through the even spread of these two differently coloured hairs. It is important that the ticking on the head around the eyes, the chest and on the feet is also as even as on the body (including the belly).

## The Standard

1. Type and Shape	20
2. Head, Eyes and Ears	10
3. Coat	10
4. Topcolour and ticking	15
5. Bellycolour and ticking	15
6. Undercolour	15
7. Condition and Presentation	<u>15</u>
	100

## Faults

- slight deviation of colour under positions 4, 5 and 6
- slightly long in ticking or uneven ticking
- slightly dark (patches) on body (including belly), head, legs and/or feet
- few odd coloured hairs

## Disqualifications

- severe deviation of colour under positions 4, 5 and 6
- severely long in ticking or uneven ticking
- severely dark (patches) on body (including belly) and/or head
- too many odd coloured hairs

*In addition to the above, all faults and disqualifications as mentioned under the General Description apply.*

## Solid Golden-agouti



### 4. Topcolour and ticking

The topcolour is to be a rich, warm mahogany colour with even black ticking. The ticking is evenly spread on the body as on the head, around the eyes, the chest and preferably on the feet.

Eyes:	Dark
Ears:	Black
Pads and Toenails:	Black

### 5. Bellycolour and ticking

The colour on the belly is slightly matter and shows an evenly spread ticking.

### 6. Undercolour

To be deep black.

## Solid Grey-agouti



### 4. Topcolour and ticking

The topcolour is to be a buff colour with even black ticking. The ticking is evenly spread on the body as on the head, around the eyes, the chest and preferably on the feet.

Eyes:	Dark
Ears:	Black
Pads and Toenails:	Black

### 5. Bellycolour and ticking

The colour on the belly is slightly matter and shows an evenly spread ticking.

### 6. Undercolour

To be deep black.

## Solid Lemon-agouti



### 4. Topcolour and ticking

The topcolour is to be a cream colour with even black ticking. The ticking is evenly spread on the body as on the head, around the eyes, the chest and preferably on the feet.

Eyes:	Dark
Ears:	Black
Pads and Toenails:	Black

### 5. Bellycolour and ticking

The colour on the belly is slightly matter and shows an evenly spread ticking.

### 6. Undercolour

To be deep black.

## Solid Silver-agouti



### 4. Topcolour and ticking

The topcolour is to be a silver-grey colour with even black ticking. The ticking is evenly spread on the body as on the head, around the eyes, the chest and preferably on the feet.

Eyes:	Dark ruby
Ears:	Black
Pads and Toenails:	Black

### 5. Bellycolour and ticking

The colour on the belly is slightly matter and shows an evenly spread ticking.

### 6. Undercolour

To be deep black.



# Solid Orange-agouti

## 4. Topcolour and ticking

The topcolour is to be a rich, golden colour with even chocolate ticking. The ticking is evenly spread on the body as on the head, around the eyes, the chest and preferably on the feet.

Eyes:	Ruby
Ears:	Chocolate
Pads and Toenails:	Chocolate

## 5. Bellycolour and ticking

The colour on the belly is slightly matter and shows an evenly spread ticking.

## 6. Undercolour

To be deep chocolate.





## Solid Cream-agouti

### 4. Topcolour and ticking

The topcolour is to be a cream colour with even chocolate ticking. The ticking is evenly spread on the body as on the head, around the eyes, the chest and preferably on the feet.

Eyes:	Ruby
Ears:	Chocolate
Pads and Toenails:	Chocolate

### 5. Bellycolour and ticking

The colour on the belly is slightly matter and shows an evenly spread ticking.

### 6. Undercolour

To be deep chocolate.



## Solid Cinnamon-agouti



### 4. Topcolour and ticking

The topcolour is to be a silver-white colour with even cinnamon ticking. The ticking is evenly spread on the body as on the head, around the eyes, the chest and preferably on the feet.

Eyes:	Ruby
Ears:	Cinnamon
Pads and Toenails:	Cinnamon

### 5. Bellycolour and ticking

The colour on the belly is slightly matter and shows an evenly spread ticking.

### 6. Undercolour

To be deep cinnamon, i.e. a milk chocolate colour.

## Solid Blue/white-agouti

### 4. Topcolour and ticking

The topcolour is to be a silver-white colour with even blue ticking. The ticking is evenly spread on the body as on the head, around the eyes, the chest and preferably on the feet.

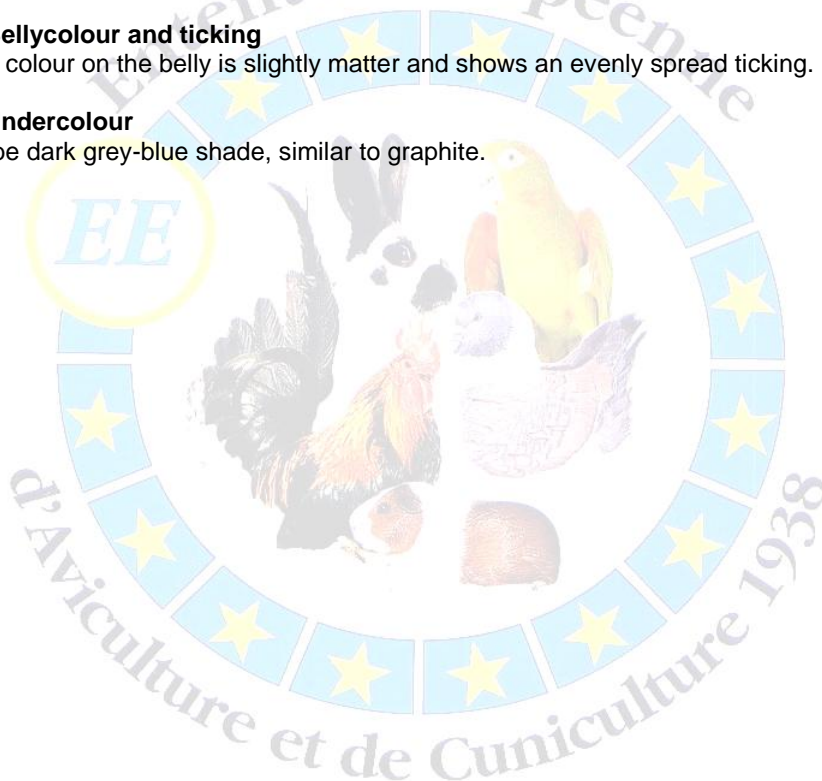
Eyes:	Dark
Ears:	Dark grey-blue
Pads and Toenails:	Dark grey-blue

### 5. Bellycolour and ticking

The colour on the belly is slightly matter and shows an evenly spread ticking.

### 6. Undercolour

To be dark grey-blue shade, similar to graphite.



# Argentés

## Introduction

Argentés are ruby or pink-eyed Agoutis that currently have tipping rather than ticking, although ticking is desired. Tipping shows the hairshaft as follows: the undercolour nearest the skin and the topcolour at the tip of the hair. Most exhibits do therefore not show the three-coloured hair shaft at the moment. Those that do show the same banding on the hairshaft as stated under Agoutis will prevail over those that merely show tipping.

The ticking is created through the even spread of these three differently coloured hairs. It is important that the ticking on the head around the eyes, the chest and on the feet is also as even as on the body. The belly strip is made up from hairs that have a narrow band of undercolour topped with topcolour. The belly strip needs to have a well defined demarcation line and be as narrow as possible.

## The Standard

1. Type and Shape	20
2. Head, Eyes and Ears	10
3. Coat	10
4. Topcolour and ticking/tipping	15
5. Bellycolour and strip	15
6. Undercolour	15
7. Condition and Presentation	15
	<hr/>
	100

## Faults

- slight deviation of colour under positions 4, 5 and 6
- slightly wide bellystrip
- slightly long in ticking or uneven ticking
- slightly dark or light on chest, legs and feet
- slight eyecircles
- few odd coloured hairs

## Disqualifications

- severe deviation of colour under positions 4, 5 and 6
- bellystrip too wide
- severely long in ticking or uneven ticking
- severely dark or light on chest, legs and feet
- too large eyecircles
- too many odd coloured hairs

*In addition to the above, all faults and disqualifications as mentioned under the General Description apply.*

# Argentés



## 4. Topcolour and ticking/tipping

The ticking/tipping is evenly spread on the body as on the head, around the eyes, the chest and on the feet. For topcolour and colour of ticking/tipping see Table 1.

## 5. Bellycolour and strip

The colour on the belly is slightly matter and without ticking. The belly strip needs to have a well defined demarcation line and be as narrow as possible.

## 6. Undercolour

For topcolour and colour of ticking/tipping see Table 1.





## Solid Argentes



### **4. Topcolour and ticking/tipping**

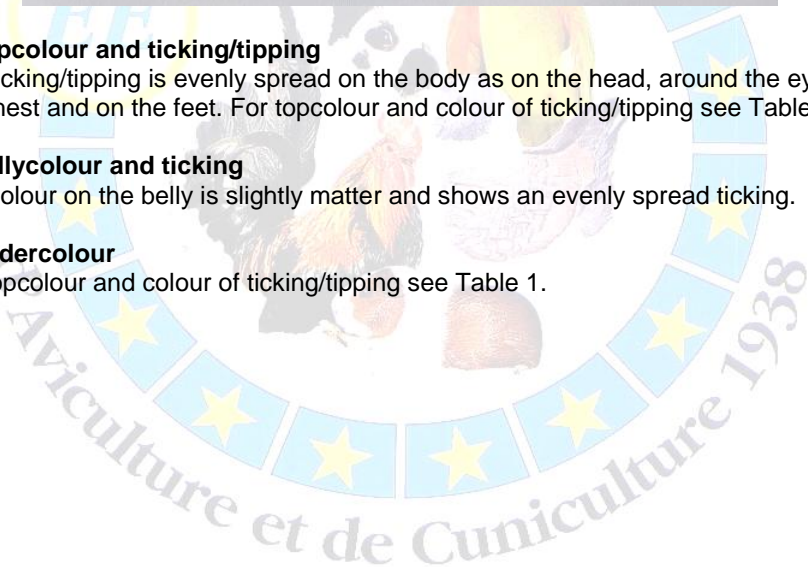
The ticking/tipping is evenly spread on the body as on the head, around the eyes, the chest and on the feet. For topcolour and colour of ticking/tipping see Table 1.

### **5. Bellycolour and ticking**

The colour on the belly is slightly matter and shows an evenly spread ticking.

### **6. Undercolour**

For topcolour and colour of ticking/tipping see Table 1.





**Table 1.**

	Topcolour	Ticking/tipping	Eyes	Ears	Pads	Toenails	Undercolour
Slate/gold-argente	Gold	Slate	Dark ruby	Dark	Dark	Dark	Slate
Slate/Buf-argente	Buf	Slate	Dark ruby	Dark	Dark	Dark	Slate
Slate/Cream-argente	Cream	Slate	Dark ruby	Dark	Dark	Dark	Slate
Slate/White-argente	Silver-grey	Slate	Dark ruby	Dark	Dark	Dark	Slate
Lilac/Gold-argente	Gold	Lilac	Pink	Flesh pink	Flesh pink	Horn-coloured	Lilac
Lilac/Saffron-argente	Saffron	Lilac	Pink	Flesh pink	Flesh pink	Horn-coloured	Lilac
Lilac/Cream-argente	Cream	Lilac	Pink	Flesh pink	Flesh pink	Horn-coloured	Lilac
Lilac/White-argente	Silver-grey	Lilac	Pink	Flesh pink	Flesh pink	Horn-coloured	Lilac
Beige/Gold-argente	Gold	Beige	Pink	Flesh pink	Flesh pink	Horn-coloured	Beige
Beige/Saffron-argente	Saffron	Beige	Pink	Flesh pink	Flesh pink	Horn-coloured	Beige
Beige/Cream-argente	Cream	Beige	Pink	Flesh pink	Flesh pink	Horn-coloured	Beige
Beige/White-argente	Silver-grey	Beige	Pink	Flesh pink	Flesh pink	Horn-coloured	Beige

# Selfs

## Introduction

A Self is a single coloured animal where the colour should be the same all over the exhibit, without any other coloured hairs or patches.. The Self breeds can be split up into two colour groups:

### 1. The Black / Brown group:

- Black
- Blue
- Slate
- Lilac
- Chocolate
- Beige

### 2. The Red / Yellow group:

- Red
- Golden (DE)
- Golden (PE)
- Buff
- Saffron
- Cream (DE)
- Cream (PE)
- White (DE)
- White (PE)

## The Standard

1. Type and Shape	20
2. Head, Eyes and Ears	10
3. Coat	10
4. Topcolour	15
5. Bellycolour	15
6. Undercolour	15
7. Condition and Presentation	15
	<u>100</u>

## Faults

- slight deviation of colour under positions 4, 5 and 6
- few odd coloured hairs
- any shading of skin on body, ears and/or pads

## Disqualifications

- severe deviation of colour under positions 4, 5 and 6
- too many odd coloured hairs

*In addition to the above, all faults and disqualifications as mentioned under the General Description apply.*

# Black



## 4. Topcolour

The topcolour is to be a deep and lustrous black colour. The colour of the entire cavy should be of an even shade all over and free from flakiness, shading as well as odd coloured hairs.

Eyes:	Dark
Ears:	Black
Pads:	Black
Toenails:	Black

## 5. Bellycolour

The belly colour is slightly matter in comparison to the topcolour.

## 6. Undercolour

Should match the topcolour down to the skin as much as possible.

# Blue



## 4. Topcolour

The topcolour is to be a dark grey-blue shade, similar to graphite, free from any hint of brown. The colour of the entire cavy should be of an even shade all over and free from flakiness, shading as well as odd coloured hairs.

Eyes:	Dark
Ears:	Dark grey-blue
Pads:	Dark grey-blue
Toenails:	Dark grey-blue

## 5. Bellycolour

The belly colour is slightly matter in comparison to the topcolour.

## 6. Undercolour

Should match the topcolour down to the skin as much as possible.

## Slate



### 4. Topcolour

The topcolour is to be a medium grey colour, free from any hint of brown. The colour of the entire cavy should be of an even shade all over and free from flakiness, shading as well as odd coloured hairs. Young exhibits invariably have a darker, more intensive colour than adult exhibits.

Eyes:	Dark ruby
Ears:	Dark
Pads:	Dark
Toenails:	Dark

### 5. Bellycolour

The belly colour is slightly matter in comparison to the topcolour.

### 6. Undercolour

Should match the topcolour down to the skin as much as possible.



# Lilac



## 4. Topcolour

The topcolour is to be a medium dove grey colour with a hint of pink veiling. The colour of the entire cavy should be of an even shade all over and free from flakiness, shading as well as odd coloured hairs. Young exhibits invariably have a darker, more intensive colour than adult exhibits.

Eyes:	Pink
Ears:	Flesh pink
Pads:	Flesh pink
Toenails:	Horn-coloured

## 5. Bellycolour

The belly colour is slightly matter in comparison to the topcolour.

## 6. Undercolour

Should match the topcolour down to the skin as much as possible.

# Chocolate



## 4. Topcolour

The topcolour is to be a rich dark brown colour, like plain chocolate. The colour of the entire cavy should be of an even shade all over and free from flakiness, shading as well as odd coloured hairs.

Eyes:	Dark ruby
Ears:	Chocolate
Pads:	Chocolate
Toenails:	Chocolate

## 5. Bellycolour

The belly colour is slightly matter in comparison to the topcolour.

## 6. Undercolour

Should match the topcolour down to the skin as much as possible.

## Coffee



### 4. Topcolour

The topcolour is to be a warm toffee colour (coffee with milk) but more darker than beige. The colour of the entire cavy should be of an even shade all over and free from flakiness, shading as well as odd coloured hairs. Young exhibits invariably have a darker, more intensive colour than adult exhibits.

Eyes:	Dark ruby
Ears:	Dark brown
Pads:	Dark brown
Toenails:	Dark brown

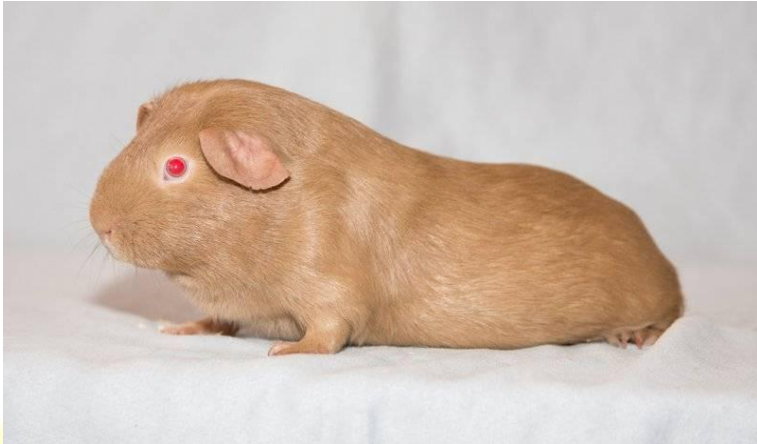
### 5. Bellycolour

The belly colour is slightly matter in comparison to the topcolour.

### 6. Undercolour

Should match the topcolour down to the skin as much as possible.

## Beige



### 4. Topcolour

The topcolour is to be a pale brown colour, like milky coffee with a hint of grey veiling. The colour of the entire cavy should be of an even shade all over and free from flakiness, shading as well as odd coloured hairs. Young exhibits invariably have a darker, more intensive colour than adult exhibits.

Eyes:	Pink
Ears:	Flesh pink
Pads:	Flesh pink
Toenails:	Horn-coloured

### 5. Bellycolour

The belly colour is slightly matter in comparison to the topcolour.

### 6. Undercolour

Should match the topcolour down to the skin as much as possible.

## Red



### 4. Topcolour

The topcolour is to be a rich and warm dark red colour. The colour of the entire cavy should be of an even shade all over and free from flakiness, shading as well as odd coloured hairs.

Eyes:	Dark
Ears:	Black
Pads:	Black
Toenails:	Black

### 5. Bellycolour

The belly colour is slightly matter in comparison to the topcolour.

### 6. Undercolour

Should match the topcolour down to the skin as much as possible.



## Golden Dark Eyed (DE)



### 4. Topcolour

The topcolour is to be a rich and warm golden-orange colour. The colour of the entire cavy should be of an even shade all over and free from flakiness, shading as well as odd coloured hairs.

Eyes:	Dark brown
Ears:	Flesh pink
Pads:	Flesh pink
Toenails:	Horn-coloured

### 5. Bellycolour

The belly colour is slightly matter in comparison to the topcolour.

### 6. Undercolour

Should match the topcolour down to the skin as much as possible.

## Golden Pink Eyed (PE)



### 4. Topcolour

The topcolour is to be a rich and warm golden-orange colour. The colour of the entire cavy should be of an even shade all over and free from flakiness, shading as well as odd coloured hairs.

Eyes:	Pink
Ears:	Flesh pink
Pads:	Flesh pink
Toenails:	Horn-coloured

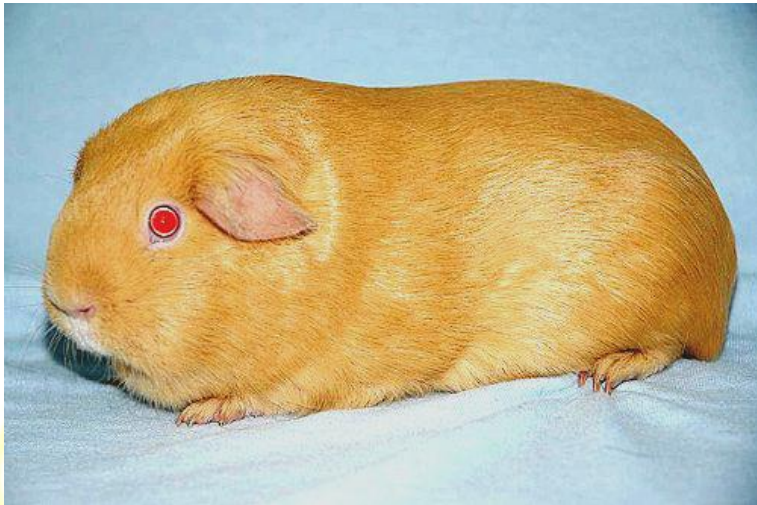
### 5. Bellycolour

The belly colour is slightly matter in comparison to the topcolour.

### 6. Undercolour

Should match the topcolour down to the skin as much as possible.

# Saffron



## 4. Topcolour

The topcolour is to be a rich, dark ochre yellow colour. The colour of the entire cavy should be of an even shade all over and free from flakiness, shading as well as odd coloured hairs.

Eyes:	Pink
Ears:	Flesh pink
Pads:	Flesh pink
Toenails:	Horn-coloured

## 5. Bellycolour

The belly colour is slightly matter in comparison to the topcolour.

## 6. Undercolour

Should match the topcolour down to the skin as much as possible.

## Buff



### 4. Topcolour

The topcolour is to be a rich, dark ochre yellow colour. The colour of the entire cavy should be of an even shade all over and free from flakiness, shading as well as odd coloured hairs.

Eyes:	Dark brown
Ears:	Flesh pink
Pads:	Flesh pink
Toenails:	Horn-coloured

### 5. Bellycolour

The belly colour is slightly matter in comparison to the topcolour.

### 6. Undercolour

Should match the topcolour down to the skin as much as possible.

## Cream Dark Eyed (DE)



### 4. Topcolour

The topcolour is to be a soft and pale cream colour. The colour of the entire cavy should be of an even shade all over and free from flakiness, shading as well as odd coloured hairs.

Eyes:	Dark ruby
Ears:	Flesh pink
Pads:	Flesh pink
Toenails:	Horn-coloured

### 5. Bellycolour

The belly colour is slightly matter in comparison to the topcolour.

### 6. Undercolour

Should match the topcolour down to the skin as much as possible.



## Cream Pink Eyed (PE)



### 4. Topcolour

The topcolour is to be a soft and pale cream colour. The colour of the entire cavy should be of an even shade all over and free from flakiness, shading as well as odd coloured hairs.

Eyes:	Pink
Ears:	Flesh pink
Pads:	Flesh pink
Toenails:	Horn-coloured

### 5. Bellycolour

The belly colour is slightly matter in comparison to the topcolour.

### 6. Undercolour

Should match the topcolour down to the skin as much as possible.

## White Dark Eyed (DE)



### 4. Topcolour

The topcolour is to be pure snow white. The colour of the entire cavy should be of an even shade all over and free from flakiness, shading as well as odd coloured hairs.

Eyes:	Dark ruby or blue
Ears:	Flesh pink
Pads:	Flesh pink
Toenails:	Horn-coloured

### 5. Bellycolour

The belly colour is slightly matter in comparison to the topcolour.

### 6. Undercolour

Should match the topcolour down to the skin as much as possible.

## White Pink Eyed (PE)



### 4. Topcolour

The topcolour is to be pure snow white. The colour of the entire cavy should be of an even shade all over and free from flakiness, shading as well as odd coloured hairs.

Eyes:	Pink
Ears:	Flesh pink
Pads:	Flesh pink
Toenails:	Horn-coloured

### 5. Bellycolour

The belly colour is slightly matter in comparison to the topcolour.

### 6. Undercolour

Should match the topcolour down to the skin as much as possible.

# Marked Varieties

## Introduction

Marked varieties show all their markings from birth with the exception of the Himalayan and Californian which is born pure self coloured with the markings appearing at a later stage.

- Brindle
- Tortoiseshell
- Harlequin
- Magpie
- Tortoise and white
- Bicolour
- Tricolour
- Dutch
- Himalayan
- Californian
- Dalmation
- Roan
- Tan
- Fox
- Lux
- Otter

## The Standard

1. Type and Shape	20
2. Head, Eyes and Ears	10
3. Coat	10
4. Breedspecific	15
5. Breedspecific	15
6. Colour	15
7. Condition and Presentation	15
	100

## Faults

- slight deviation of colour under positions 4, 5 and/or 6

## Disqualifications

- severe deviation of colour under positions 4, 5 and/or 6

*In addition to the above, all faults and disqualifications as mentioned under the General Description apply.*

# Brindle



## 4. Head and top markings

The head and body show an even mixture of two standardized colours, except white.

## 5. Belly markings

The belly shows an even mixture of two standardized colours, except white.

## 6. Colour

The colours should be in line with the standard description for “Agoutis and Sells”.

## Faults

- a few small patches of one colour
- slightly uneven colour mixture

## Disqualifications

- numerous and/or bigger patches of one colour
- very uneven colour mixture
- numerous and/or bigger patches of one colour not to exceed 1/3 of the entire cavy.



# Tortoiseshell



## 4. Head and top markings

The head and body show an equal distribution of square-cut patches of preferably equal size of two standardized colours, except white. There should be an imaginary line running from the nose to the hindquarters on the back and belly separating two opposing coloured patches.

## 5. Belly markings

The markings from the top are continued on the belly.

## 6. Colour

The colours should be in line with the standard description for “Agoutis and Sells”.

## Faults

- slightly uneven patching
- slightly big and/or small patches
- banding
- slight brindling
- slightly indistinct patches

## Disqualifications

- very uneven patching
- very big and/or small patches
- less than three coloured patches per side (including the head)
- less than 25% of one colour
- too much brindling
- lacking clear cut lines

# Tortoise and White



## 4. Head and top markings

The head and body show an equal distribution of square-cut patches of preferably equal size of two standardized colours in combination with white. There should be an imaginary line running from the nose to the hindquarters on the back and belly separating opposing coloured patches.

## 5. Belly markings

The markings from the top are continued on the belly.

## 6. Colour

The colours should be in line with the standard description for "Agoutis and Sells".

## Faults

- slightly uneven patching
- slightly big and/or small patches
- banding
- slightly indistinct patches

## Disqualifications

- very uneven patching
- very big and/or small patches
- less than three coloured patches per side (including the head)
- less than 20% of one colour
- too many indistinct patches
- one of the three colours completely missing on one side (including the head)

# Harlequin



## 4. Head and top markings

The head and body show an equal distribution of square-cut patches of preferably equal size of two standardized colours and mixed patches, except white. There should be an imaginary line running from the nose to the hindquarters on the back and belly separating opposing coloured patches.

## 5. Belly markings

The markings from the top are continued on the belly.

## 6. Colour

The colours should be in line with the standard description for "Agoutis and Selfs".

## Faults

- slightly uneven patching
- slightly big and/or small patches
- banding
- slightly indistinct patches

## Disqualificationobns

- very uneven patching
- very big and/or small patches
- less than three coloured patches per side (including the head)
- less than 20% of one colour
- too many indistinct patches
- one of the three required patches completely missing on one side (including the head)

# Magpie



## 4. Head and top markings

The head and body show an equal distribution of square-cut patches of preferably equal size of one standardized colour and white and mixed patches. There should be an imaginary line running from the nose to the hindquarters on the back and belly separating opposing coloured patches.

## 5. Belly markings

The markings from the top are continued on the belly.

## 6. Colour

The colours should be in line with the standard description for "Agoutis and Selfs".

## Faults

- slightly uneven patching
- slightly big and/or small patches
- banding
- slightly indistinct patches

## Disqualificationobns

- very uneven patching
- very big and/or small patches
- less than three coloured patches per side (including the head)
- less than 20% of one colour
- too many indistinct patches
- one of the three required patches completely missing on one side (including the head)



# Bicolour



## 4. Distribution

It should show an equal distribution (50/50%) of two standardized colours

## 5. Balanced

The two colours should be balanced on both sides including the belly.

## 6. Colour

The colours should be in line with the standard description for "Agoutis and Sells".

## Faults

- slightly uneven distribution or unbalanced

## Disqualifications

- very uneven distribution or unbalanced
- less than two coloured patches per side (including the head)
- less than 25% of one colour



## Tricolour



### 4. Distribution

It should show an equal distribution of three standardized colours

### 5. Balanced

The three colours should be balanced on both sides including the belly.

### 6. Colour

The colours should be in line with the standard description for “Agoutis and Selfs”.

### Faults

- slightly uneven distribution or unbalanced

### Disqualifications

- very uneven distribution or unbalanced
- less than three coloured patches per side (including the head)
- less than 20% of one colour

# Dutch



## 4. Head markings

The cheek markings should be oval and surround the eyes and ears without taking in the smellers. The cheek markings should touch behind the ears, without any white showing. The shape of the blaze is dictated by the cheek markings.

## 5. Body markings

The saddle starts midway between neck and hips to be cut as a straight line that runs round the body. The stops are situated on the hind feet and should ideally start between the hock and the toe ends. Stops are required on both hind feet.

## 6. Colour

The cheeks and saddle are standardized in "Agoutis and Selfs", with a white body colour. The colours should be in line with the standard description for "Agoutis and Selfs".

## Faults

- slightly big, small or uneven cheek markings
- cheeks not quite touching behind the ears
- flesh marks on the ears
- slightly short, narrow or wide blaze
- saddle cut slightly too far forward or slipping
- uneven cut
- slightly short or long in stops
- one missing stop
- cheeks running into the smellers

### **Disqualifications**

- one ear set outside the cheek markings
- one or two total flesh ears
- odd coloured patches
- both stops missing
- white of one or two stops going round the hocks



# Himalayan



## 4. Head markings

The head markings consist of the coloured smut and ears. The smut starts well up between the eyes and is pear-shaped right down to the nose without taking in the corners of the eyes. There should be as clear a demarcation line as possible.

## 5. Body markings

The body markings consist of the coloured legs, feet and pads. Colour to be carried well up the legs.

## 6. Colour(s)

The markings are standardized in Black or Chocolate. The eye colour is red. The body colour is white. The colours should be in line as their standard description under "Sells". The colour of ears, pads and toenails need to match with the colour of the markings.

## Faults

- slightly deviating shape of the smut
- slight body stain
- slightly lacking in points' colour density in markings
- a hint of brindling and/or rust in the points(markings)

## Disqualifications

- wrong shape of the smut
- too much body stain
- severely lacking colour density in markings
- too many white hairs and/or too much rust in the points(markings)

( NB: Himalayans are born completely white and develop the coloured markings at a later stage.)



# Californian



## 4. Head markings

The head markings consist of the coloured smut and ears. The smut starts well up between the eyes and is pear-shaped right down to the nose without taking in the corners of the eyes. At the base of the ears it shows a coloured line. There should be as clear a demarcation line as possible. A small spot on their throat is permitted.

## 5. Body markings

The body markings consist of the coloured legs, feet, pads and genitals. Colour to be carried well up the legs.

## 6. Colour(s)

The markings are standardized in Black or Chocolate. The body colour can be white, cream, buff, golden or red. The colours should be in line as their standard description under "Selfs". The colour of ears, pads and toenails need to match with the colour of the markings.

## Faults

- slightly deviating shape of the smut
- slight body stain
- slightly lacking in points' colour density in markings
- a hint of brindling and/or rust in the points(markings)

## Disqualifications

- wrong shape of the smut
- too much body stain
- severely lacking colour density in markings
- too many white hairs and/or too much rust in the points(markings)

( NB: Californians are born completely self coloured and develop the markings at a later stage.)



# Dalmation



## 4. Head Markings

The head markings consist of a white blaze with solid colour on either side giving a well balanced appearance. The blaze starts between the ears and reaches the nose without taking in the eyes. The cheeks should preferably be solid coloured and show no roaning.

## 5. Body Markings

The body is white with coloured spots, preferably of even size. The legs and feet are also solid coloured and preferably without any roaning. The spotting should be clear, distinct and evenly distributed around the body with good demarcation between spots.

## 6. Colour

The head and body markings are standardized in “Agoutis, Solid agoutis, Argentes, Solid argentes, Brindles and Selfs”. The colours should be in line with the standard description for “Agoutis, Solid agoutis, Argentes, Solid argentes, Brindles and Selfs” Due to the Dalmation gene the dark eyes may have a ruby tint and may have a distinct blue ring around the iris.

## Faults

- few spots or spots very close together
- slightly roaned head, legs, feet and/or body
- slightly short, lopsided, wide or asymmetrical blaze
- one white toe and/or toenail without any pigmentation

### Disqualifications

- too few spots or spots too close together (especially on the rump)
- severely roaned head, legs, feet and/or body
- blaze that is too short, lopsided, wide and/or asymmetrical
- missing blaze or blaze with a break
- more than one white toe and/or toenail without any pigmentation



**(NB – Important: Dalmations should never be bred together and Dalmations should never be bred with Roans)**

# Roan



## 4. Head Markings

The head is solid coloured.

## 5. Body Markings

The Roan is genetically a coloured cavy with the colour having been repressed on certain body parts. The body consists of evenly intermixed coloured and white hairs. The legs and feet are solid coloured.

## 6. Colour

The head and body markings are standardized in “Agoutis, Solid agoutis, Argentés, Solid argentés, Brindles and Selves”. The colours should be in line with the standard description for “Agoutis, Solid agoutis, Argentés, Solid argentés, Brindles and Selves”. Due to the Roan gene the dark eyes may have a ruby tint.

## Faults

- little, much or uneven roaning
- slightly roaned head, legs and/or feet
- one white toe and/or toenail without any pigmentation

## Disqualifications

- too little, too much or too uneven roaning
- severely roaned head, legs and/or feet
- more than one white toe and/or toenail without any pigmentation
- any vestige of a blaze

**(NB – Important: Roans should never be bred together and Roans should never be bred with Dalmations)**

# Dapple



## 4. Head and Feet Markings

Dapple markings consist of a dark brown mask, legs and footpads. The ears should either be brown or have dappled coloured (uneven pigmentation) ears. The mask should start at the height of eyes, without touching the eye-corners, and interference across the nose.

## 5. Body Markings

Body markings is formed of chocolate and white hairs that are evenly mixed and have the same impression as at a roan, but genes have nothing in common. The factor responsible for drawing dapple lightens chocolate hairs to white.

## 6. Colour

Head and body marking is standardized in Chocolate. Colour should be consistent with the standard description for chocolates.

## Faults

- slightly weaker colour of head characters
- slightly brindle mask
- slightly brindle marking of feet
- slightly uneven marking of body
- eye circles are allowed but not desired

## Disqualifications

- significantly weak colour of head characters
- significantly brindle mask
- significantly brindle marking of foote
- significantly uneven marking of body



# Tan



## 4. Head Markings

The nostrils are tan coloured and well defined. The whiskers have the same colour as the surrounding colour (two different colours are possible). The tan coloured eye circles should be round, unbroken and not too wide. The hairs inside the ears to be tan coloured and on the forehead at the base of each ear is a clear tan coloured spot (also called pea spot). The jowls to be tan coloured. The chest has individual tan coloured hairs that run between the legs and gradually merge into the belly strip.

## 5. Body Markings

The body is solid coloured. The flanks are thickly laced with long tan hairs. The belly strip must be as wide as possible and visible when the cavy is viewed from the side. The hairs on the belly strip show a long tan coloured tip over the undercolour, creating a bright tan coloured belly. The inside of the front and back legs as well as the inside toes are also tan coloured. Few tan coloured hairs can be found on the outside.

## 6. Colour

The belly colour and markings are a warm mahogany (tan colour). The body colour is either black, blue, slate, lilac, chocolate or beige. The body colour should be in line as their standard description under "Selves".

## Faults

- little or much and/or uneven lacing on the sides of the rump
- little or much ticking on chest, legs and feet
- little or much definition of eye circles and nostrils
- little, much or indistinct throat band
- slightly uneven, ticked or tipped belly colour



- slightly narrow belly strip
- slight peppering between the nostrils and the eye circles
- missing pea spots

### **Disqualifications**

- too little or much and/or uneven lacing on the sides of the rump
- too little or much ticking on chest, legs and feet
- too little or much definition of eye circles and nostrils
- too little or too much throat band
- belly colour too uneven or too ticked or tipped
- belly strip too narrow
- too much peppering between the nostrils and the eye circles

*In addition to the above, all faults and disqualifications as mentioned under the General Description apply.*



# Lux

## 4. Head Markings

The nostrils are buff coloured and well defined. The whiskers have the same colour as the surrounding colour (two different colours are possible). The buff coloured eye circles should be round, unbroken and not too wide. The hairs inside the ears to be buff coloured and on the forehead at the base of each ear is a clear buff coloured spot (also called pea spot). The jowls to be buff coloured. The chest has individual buff coloured hairs that run between the legs and gradually merge into the belly strip.

## 5. Body Markings

The body is solid coloured. The flanks are thickly laced with long buff hairs. The belly strip must be as wide as possible and visible when the cavy is viewed from the side. The hairs on the belly strip show a long buff coloured tip over the undercolour, creating a clear buff coloured belly. The inside of the front and back legs as well as the inside toes are also buff coloured. Few buff coloured hairs can be found on the outside.

## 6. Colour

The belly colour and markings are a buff coloured. The body colour is either black, blue, slate, lilac, chocolate or beige. The body colour should be in line as their standard description under "Selfs".

## Faults

- little or much and/or uneven lacing on the sides of the rump
- little or much ticking on chest, legs and feet
- little or much definition of eye circles and nostrils
- little, much or indistinct throat band
- slightly uneven, ticked or tipped belly colour
- slightly narrow belly strip
- slight peppering between the nostrils and the eye circles
- missing pea spots

## Disqualifications

- too little or much and/or uneven lacing on the sides of the rump
- too little or much ticking on chest, legs and feet
- too little or much definition of eye circles and nostrils
- too little or too much throat band
- belly colour too uneven or too ticked or tipped
- belly strip too narrow
- too much peppering between the nostrils and the eye circles

*In addition to the above, all faults and disqualifications as mentioned under the General Description apply.*

# Otter



## 4. Head Markings

The nostrils are cream coloured and well defined. The whiskers have the same colour as the surrounding colour (two different colours are possible). The cream coloured eye circles should be round, unbroken and not too wide. The hairs inside the ears to be cream coloured and on the forehead at the base of each ear is a clear cream coloured spot (also called pea spot). The jowls to be cream coloured. The chest has individual cream coloured hairs that run between the legs and gradually merge into the belly strip.

## 5. Body Markings

The body is solid coloured. The flanks are thickly laced with long cream hairs. The belly strip must be as wide as possible and visible when the cavy is viewed from the side. The hairs on the belly strip show a long cream coloured tip over the undercolour, creating a clear cream coloured belly. The inside of the front and back legs as well as the inside toes are also cream coloured. Few cream coloured hairs can be found on the outside.

## 6. Colour

The belly colour and markings are a cream coloured. The body colour is either black, blue, slate, lilac, chocolate or beige. The body colour should be in line as their standard description under "Selves".

## Faults

- little or much and/or uneven lacing on the sides of the rump
- little or much ticking on chest, legs and feet
- little or much definition of eye circles and nostrils
- little, much or indistinct throat band
- slightly uneven, ticked or tipped belly colour
- slightly narrow belly strip

- slight peppering between the nostrils and the eye circles
- missing pea spots

### **Disqualifications**

- too little or much and/or uneven lacing on the sides of the rump
- too little or much ticking on chest, legs and feet
- too little or much definition of eye circles and nostrils
- too little or too much throat band
- belly colour too uneven or too ticked or tipped
- belly strip too narrow
- too much peppering between the nostrils and the eye circles

*In addition to the above, all faults and disqualifications as mentioned under the General Description apply.*



# Fox



## 4. Head Markings

The nostrils are white coloured and well defined. The whiskers have the same colour as the surrounding colour (two different colours are possible). The white coloured eye circles should be round, unbroken and not too wide. The hairs inside the ears to be white coloured and on the forehead at the base of each ear is a clear white coloured spot (also called pea spot). The jowls to be white coloured. The chest has individual white coloured hairs that run between the legs and gradually merge into the belly strip.

## 5. Body Markings

The body is solid coloured. The flanks are thickly laced with long white hairs. The belly strip must be as wide as possible and visible when the cavy is viewed from the side. The hairs on the belly strip show a long white coloured tip over the undercolour, creating a silver-white coloured belly. The inside of the front and back legs as well as the inside toes are also white coloured. Few white coloured hairs can be found on the outside.

## 6. Colour

The belly colour and markings are white coloured. The body colour is either black, blue, slate, lilac, chocolate or beige. The body colour should be in line as their standard description under "Sels".

## Faults

- little or much and/or uneven lacing on the sides of the rump
- little or much ticking on chest, legs and feet
- little or much definition of eye circles and nostrils
- little, much or indistinct throat band
- slightly uneven, ticked or tipped belly colour



- slightly narrow belly strip
- slight peppering between the nostrils and the eye circles
- missing pea spots

### **Disqualifications**

- too little or much and/or uneven lacing on the sides of the rump
- too little or much ticking on chest, legs and feet
- too little or much definition of eye circles and nostrils
- too little or too much throat band
- belly colour too uneven or too ticked or tipped
- belly strip too narrow
- too much peppering between the nostrils and the eye circles

*In addition to the above, all faults and disqualifications as mentioned under the General Description apply.*



# Rough Coated Varieties

## Introduction

The Rough Coated varieties can be divided in to the following breeds:

- Satin
- Crested
- Abyssinian
- Rex
- US-Teddy
- CH-Teddy
- Skinny

## The Standard

1. Type and Shape	20
2. Head, Eyes and Ears	10
3. Breedspecific	10
4. Breedspecific	15
5. Breedspecific	15
6. Breedspecific	15
7. Condition and Presentation	15
	<u>100</u>



# Satin (Smooth coated)



## Introduction

The Satin factor causes the hair shaft to be flat and each individual hair to be thinner. Therefore it reflects light in a completely different way which gives the coat the required sheen.

## The Standard

1. Type and Shape	20
2. Head, Eyes and Ears	10
3. Coat	10
4. Texture	15
5. Sheen	15
6. Colour and/or markings	15
7. Condition and Presentation	15
	<hr/>
	100

## 3. Coat

The coat is around 2½ cm long. The coat has to be free of rosettes and ruffles and is not in moult.

## 4. Texture

The coat is dense, short, flat and glossy and consists of fine, silky hairs.

## 5. Sheen

The ideal coat of an exhibit looks even with a glossy sheen all over the body, head, legs and feet.

## 6. Colour and/or markings

Standardised in all recognised colours and markings of which the standard is described under "Smooth coated". Colour and/ markings should ideally conform to these descriptions.

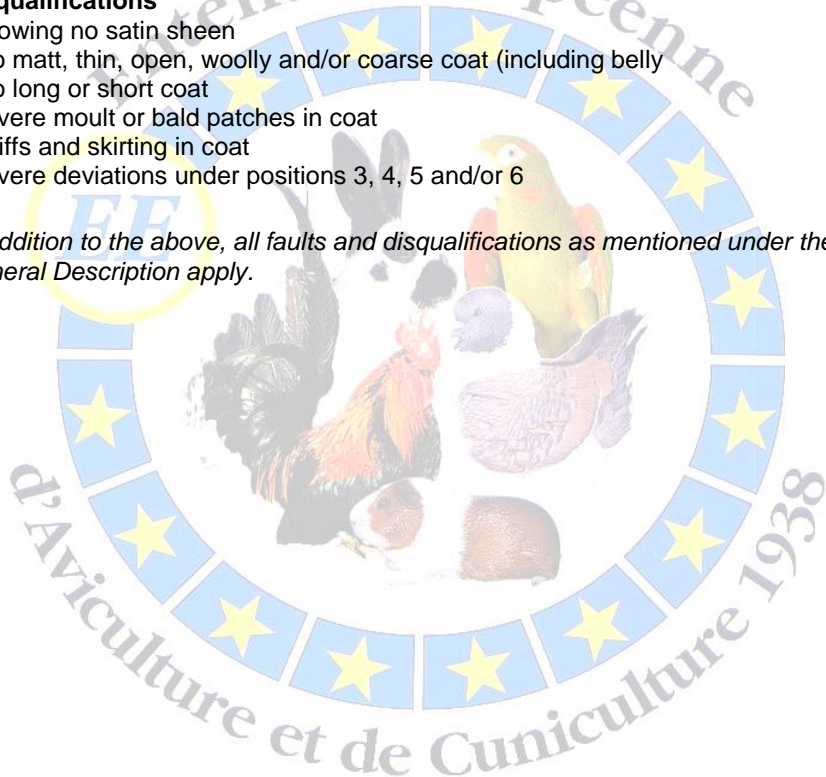
### Faults

- little satin sheen
- slightly matt, thin, open, woolly and/or coarse coat (including belly)
- slightly long or short coat
- other slight deviations under positions 3, 4, 5 and/or 6

### Disqualifications

- showing no satin sheen
- too matt, thin, open, woolly and/or coarse coat (including belly)
- too long or short coat
- severe moult or bald patches in coat
- quiffs and skirting in coat
- severe deviations under positions 3, 4, 5 and/or 6

*In addition to the above, all faults and disqualifications as mentioned under the General Description apply.*



# Crested Satin



## Introduction

The Satin factor causes the hair shaft to be flat and each individual hair to be thinner. Therefore it reflects light in a completely different way which gives the coat the required sheen.

## The Standard

1. Type and Shape	20
2. Head, Eyes and Ears	10
3. Coat	10
4. Position, Shape and centre of the crest	15
5. Texture and Sheen	15
6. Colour and/or markings	15
7. Condition and Presentation	15
	<hr/>
	100

## 3. Coat

The coat is around 2½ cm long. The coat has to be free of rosettes and ruffles and is not in moult.

## 4. Position, Shape and centre of the crest

The Crest should be placed in the middle of the forehead, in the centre of the diagonals of an imaginary quadrangle which is formed by the eyes and the ears. The crest needs to be as round and big as possible and radiates from a pinpoint centre.



## 5. Texture and sheen

The coat is dense, short, flat and glossy and consists of fine, silky hairs. The ideal coat of an exhibit looks even with a glossy sheen all over the body, head, legs and feet.

## 6. Colour and/or markings

The English Crested Satin is standardised all recognised colours and markings of which the standard is described under "Smooth coated". The American Crested Satin is standardised all recognised colours and markings, excluded is White DE/PE and marked varieties with white in them. Colour and/ markings should ideally conform to these descriptions.

### Faults

- little satin sheen
- slightly matt, thin, open, woolly and/or coarse coat (including belly)
- slightly long or short coat
- slightly open and/or guttered centre point of the crest
- slightly deviating of the position, shape or size of the crest
- sparsely white coloured crest in American Cresteds
- other slight deviations under positions 3, 4, 5 and/or 6

### Disqualifications

- showing no satin sheen
- too matt, thin, open, woolly and/or coarse coat (including belly)
- too long or short coat
- severe moult or bald patches in coat
- quiffs and skirting in coat
- centre point of the crest too open and/or too guttered
- too much deviation of the position, size or shape of the crest
- white colour in other parts on the body of Americans
- severe deviations under positions 3, 4, 5 and/or 6
- more than 1 centre of the crest

*In addition to the above, all faults and disqualifications as mentioned under the General Description apply.*

# Crested



## Introduction

The main feature on Crested cavies is the crest on their forehead. English Cresteds have crests that match the body colour, whereas American Cresteds have crests that are white.

## The Standard

1. Type and Shape	20
2. Head, Eyes and Ears	10
3. Coat	10
4. Position of the crest	15
5. Shape and centre of the crest	15
6. Colour and/or markings	15
7. Condition and Presentation	15
	<u>100</u>

## 3. Coat

The coat is around 2½ cm long. The coat has to be free of rosettes and ruffles and is not in moult.

## 4. Position of the crest

The Crest should be placed in the middle of the forehead, in the centre of the diagonals of an imaginary quadrangle which is formed by the eyes and the ears.

## 5. Shape and centre of the crest

The crest needs to be as round and big as possible and radiates from a pinpoint centre.

## 6. Colour and/or markings

The English Crested is standardised all recognised colours and markings of which the standard is described under "Smooth coated". The American Crested is standardised all recognised colours and markings, excluded is White DE/PE and marked varieties with white in them. Colour and/ markings should ideally conform to these descriptions.

### Faults

- slightly open and/or guttered centre point of the crest
- slightly deviating of the position, shape or size of the crest
- sparsely white coloured crest in American Cresteds
- other slight deviations under positions 3, 4, 5 and/or 6

### Disqualifications

- centre point of the crest too open and/or too guttered
- too much deviation of the position, size or shape of the crest
- white colour in other parts on the body of Americans
- severe deviations under positions 3, 4, 5 and/or 6
- more than 1 centre of the crest

*In addition to the above, all faults and disqualifications as mentioned under the General Description apply.*



# Abyssinian



## Introduction

The main feature Abyssinians is the presence of the evenly distributed rosettes and ridges.

## The Standard

1. Type and Shape	20
2. Head, Eyes and Ears	10
3. Colour and/or markings	10
4. Distribution of Rosettes and Ridges	15
5. Shape and Centres of Rosettes	15
6. Coat	15
7. Condition and Presentation	15
	<hr/>
	100

## 3. Colour and/or markings

Standardised in all recognised colours and markings of which the standard is described under "Smooth coated". Colour and/ markings should ideally conform to these descriptions.,

## 4. Distribution of Rosettes and Ridges

Four body rosettes that form the saddle and sides rosettes; one rosette on each hip and two rump rosettes are required. Two shoulder rosettes and/or two smaller rosettes on the nose as well as a moustache are optional, but will enhance the cavy's appearance. It is essential that all rosettes are evenly distributed over the body and that each rosette is clear and distinct from the other. Ridges are formed as a result of two rosettes placed next to one another; these must be straight, erect and stand up well.

## 5. Shape and Centres of Rosettes

The rosettes should be as round and big as possible, radiating from a pinpoint centre with good depth.

## 6. Coat

The coat of an Abyssinian is approximately 3½ cm. long and has a thick and harsh texture to it.

### Faults

- slightly soft, short or open coat
- slightly deviating shape of rosettes
- slightly open or guttered rosette centres
- slightly weak, thin or twisted ridges
- rosettes slightly out of line
- one double rosette
- other slight deviations under positions 3, 4, 5 and/or 6

### Disqualifications

- fewer or more of the required rosettes
- too soft, short or open coat
- failing distribution and shape of rosettes, rosette centres too open
- too weak, thin or twisted ridges
- two or more double rosettes
- severe deviations under positions 3, 4, 5 and/or 6

*In addition to the above, all faults and disqualifications as mentioned under the General Description apply.*



# Rex



## Introduction

A Rex is a rough coated cavy with a coarse, dense, crimped, thick, short, erect and springy coat.

## The Standard

1. Type and Shape	20
2. Head, Eyes and Ears	10
3. Colour and/or markings	10
4. Coat texture and direction	15
5. Coat length	15
6. Coat density	15
7. Condition and Presentation	15
	<u>100</u>

## 3. Colour and/or markings

Standardised in all recognised colours and markings of which the standard is described under "Smooth coated". Colour and/ markings should ideally conform to these descriptions.

## 4. Coat texture and direction

The texture of a Rex is crimped and coarse. The crimped and coarse coat shows an erect and springy look, with no areas of flatness or with coat tending to lie down. When mildly touched the coat should show resilience and return in to its original look. The whiskers are curled. The belly should be curly.

## 5. Coat length

Coat length to be no more than 2½ cm long. As a general rule, Rex invariably have a longer and slightly coarser coat than Teddies.

## 6. Coat density

The coat should be very thick and dense all over the body. The coat has to be free of rosettes and ruffles and is not in moult.

### Faults

- slightly soft-coated, slightly lacking in springiness of coat
- slight flatness of coat, slightly long-coated
- coat slightly lacking in density, slightly thin-coated on belly
- other slight deviations under positions 3, 4, 5 and/or 6

### Disqualifications

- too soft-coated, coat lacking springiness
- too much flatness of coat, too long-coated
- coat lacking density, thin on belly
- severe deviations under positions 3, 4, 5 and/or 6

*In addition to the above, all faults and disqualifications as mentioned under the General Description apply.*



# US-Teddy



## Introduction

A US-Teddy is a rough coated cavy with a soft, dense, plush, short, erect and springy coat.

## The Standard

1. Type and Shape	20
2. Head, Eyes and Ears	10
3. Colour and/or markings	10
4. Coat texture and direction	15
5. Coat length	15
6. Coat density	15
7. Condition and Presentation	15
	<hr/>
	100

## 3. Colour and/or markings

Standardised in all recognised colours and markings of which the standard is described under "Smooth coated". Colour and/ markings should ideally conform to these descriptions.

## 4. Coat texture and direction

The texture of a US-Teddy is plush and soft. The plush and soft coat shows an erect and springy look. When mildly touched the coat should show resilience and return in to its original look. The whiskers are fairly straight. The belly in young US Teddies is usually fairly curly, but tends to become flatter with age. Each individual hair shows a slight kink at the tip and with exceptional texture is inclined to point in the direction of the head.

## 5. Coat length

Coat length to be no more than 2 cm long. As a general rule, US-Teddies invariably have a shorter and more plush coat than Rex.

## 6. Coat density

The coat should be very thick and dense all over the body. The coat has to be free of rosettes and ruffles and is not in moult.

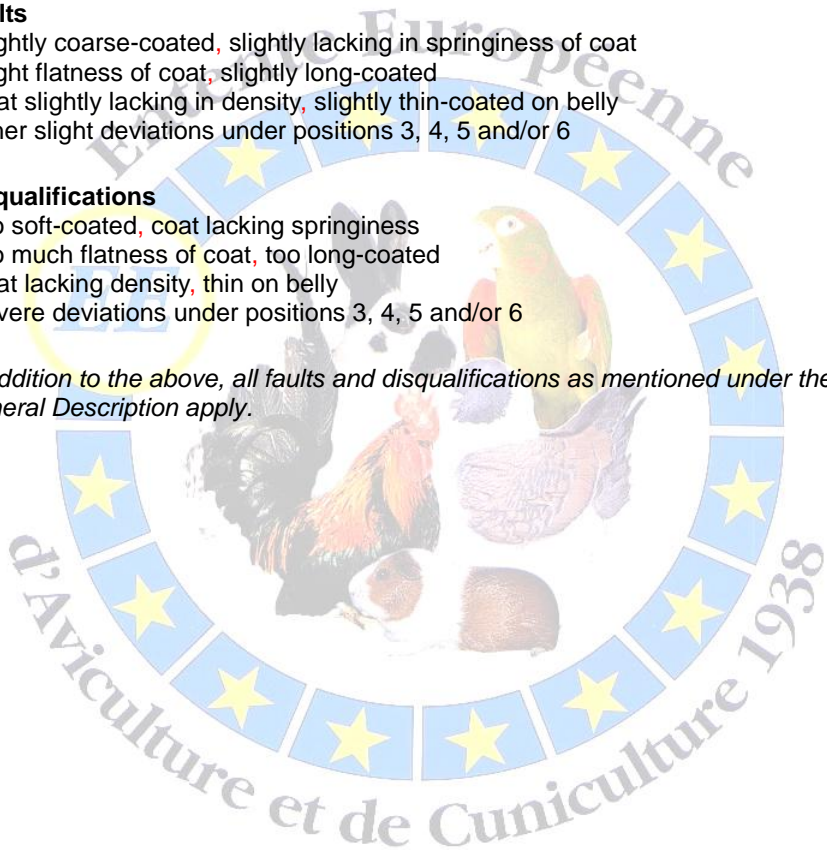
### Faults

- slightly coarse-coated, slightly lacking in springiness of coat
- slight flatness of coat, slightly long-coated
- coat slightly lacking in density, slightly thin-coated on belly
- other slight deviations under positions 3, 4, 5 and/or 6

### Disqualifications

- too soft-coated, coat lacking springiness
- too much flatness of coat, too long-coated
- coat lacking density, thin on belly
- severe deviations under positions 3, 4, 5 and/or 6

*In addition to the above, all faults and disqualifications as mentioned under the General Description apply.*



# CH-Teddy (Swiss teddy)



## Introduction

A CH-Teddy or Swiss teddy is a rough coated cavy with a longer, erect and springy coat.

## The Standard

1. Type and Shape	20
2. Head, Eyes and Ears	10
3. Colour and/or markings	10
4. Coat texture and direction	15
5. Coat length	15
6. Coat density	15
7. Condition and Presentation	15
	<hr/>
	100

## 3. Colour and/or markings

Standardised in all recognised colours and markings of which the standard is described under "Smooth coated". Colour and/ markings should ideally conform to these descriptions.

## 4. Coat texture and direction

The texture of a CH-Teddy is crimped and coarse. The crimped and coarse coat stands erect from the body to give an overall 'puff-ball' appearance. When mildly touched the coat should show resilience and return in to its original look. The whiskers and belly should be wavy.



## 5. Coat length

The coat on the head is shorter, the longer coat starts between the ears and cheeks. Coat length to be between 5 and 7 cm long. As a general rule, young CH-Teddies invariably have a shorter and more plush coat than adults.

## 6. Coat density

The coat should be very thick and dense all over the body. The coat has to be free of rosettes and ruffles and is not in moult.

### Faults

- slightly soft-coated, slightly lacking in springiness of coat
- slight flatness of coat, slightly long-coated
- coat slightly lacking in density, slightly thin-coated on belly
- other slight deviations under positions 3, 4, 5 and/or 6

### Disqualifications

- too soft-coated, coat lacking springiness
- too much flatness of coat, too long-coated
- coat lacking density, thin on belly
- severe deviations under positions 3, 4, 5 and/or 6

*In addition to the above, all faults and disqualifications as mentioned under the General Description apply.*



# Long Coated Varieties

## Introduction

Longhaired exhibits will be presented to the judge without wrappers and it is allowed to shown both unclipped and clipped. The coat of the unclipped cavies should be in proportion to the age approx. 2.5 cm per month. The coat of the clipped cavies should be even and at least be touching the board.

The colour on longhaired exhibits is not as intense as the colour on shorthaired breeds. This is caused by the fact that the pigment centres around the tips of the hairs and gets less intense as the coat grows longer. The loss of colour intensity on longhaired breeds will not be unduly penalised when judged

The Long Coated varieties can be divided in to the following breeds:

- Peruvian
- Sheltie
- Coronet
- Alpaca
- Texel
- Merino
- Lunkarya

## The Standard

1. Type and Shape	20
2. Head, Eyes and Ears	10
3. Colour and/or markings	10
4. Breedspecific	15
5. Breedspecific	15
6. Breedspecific	15
7. Condition and Presentation	15
	<u>100</u>

## 3. Colour and/or markings

The Long Coated varieties are standardised in all recognised colours and markings of which the standard is described under "[Smooth coated](#)". The colour on longhaired exhibits is not as intense as the colour on shorthaired breeds. The loss of colour intensity on longhaired breeds will not be unduly penalised when judged.

**Unclipped**



**Clipped**



# Peruvian



## Introduction

The Peruvian is a long coated cavy breed with two rump rosettes parallel and close to each other. In front of these rosettes the coat should grow forwards and form a frontal.

The body should be short, compact, low set with even height and broad shoulders. The body shape and a good, dense frontal are very important features to give the Peruvian its powerful and round impression. The Peruvian is presented with parting.

## The Standard

1. Type and Shape	20
2. Head, Eyes and Ears	10
3. Colour and/or markings	10
4. Frontal and Chops	15
5. Shoulders, Sides and Sweep	15
6. Coat Density and Texture	15
7. Condition and Presentation	<u>15</u>
	100

## 4. Frontal and Chops

The frontal should cover the head when it is adult (approx. 4 month). The head is shorter-coated. The chops which cover the cheeks and jaw line should be pronounced and strong with the hair all of one length.

## 5. Shoulders, Sides and Sweep

Peruvians have two rump rosettes. The coat of shoulders and sides should be even and harmonize with the length of the sweep.

## 6. Coat Density and Texture

The coat density should be even all around the body, and also from closest to the body and outwards to the tips. The coat texture should be soft, silky and give an elastic impression all over the body.

### Faults

- thin, non-elastic, worn texture and/or coarse coat
- short and/or uneven coat
- missing tips and/or cut/chewed coat on unclipped exhibits
- deviation in coat length compared to the expected length at the particular age on unclipped exhibits
- damaged, matted and/or tangled coat
- deviation in rosette placement

### Disqualifications

- so short and/or uneven coat (damage/cut or chewed) that it is impossible to judge
- extra rosettes
- the texture is totally coarse and/or crimped/springy

*In addition to the above, all faults and disqualifications as mentioned under the General Description apply.*





# Sheltie



## Introduction

The Sheltie is a long coated cavy breed. The head is smooth coated and the longer coat starts on the cheeks and between the ears from where it grows towards the sweep.

The body should be short, compact, low set with even height and broad shoulders. The Sheltie may be presented with parting or with mane. The Sheltie may be presented with parting or with the mane covering the parting.

## The Standard

1. Type and Shape	20
2. Head, Eyes and Ears	10
3. Colour and/or markings	10
4. Mane and Chops	15
5. Shoulders, Sides and Sweep	15
6. Coat Density and Texture	15
7. Condition and Presentation	<u>15</u>
	100

## 4. Mane and Chops

The longer coat starts between the ears, also called the mane, from where it grows towards the sweep. The chops which cover the cheeks and jaw line should be pronounced and strong with the hair all of one length.

## 5. Shoulders, Sides and Sweep

The coat of shoulders and sides should be even and harmonize with the length of the sweep.

## 6. Coat Density and Texture

The coat density should be even all around the body, and also from closest to the body and outwards to the tips. The coat texture should be soft, silky and give an elastic impression all over the body.

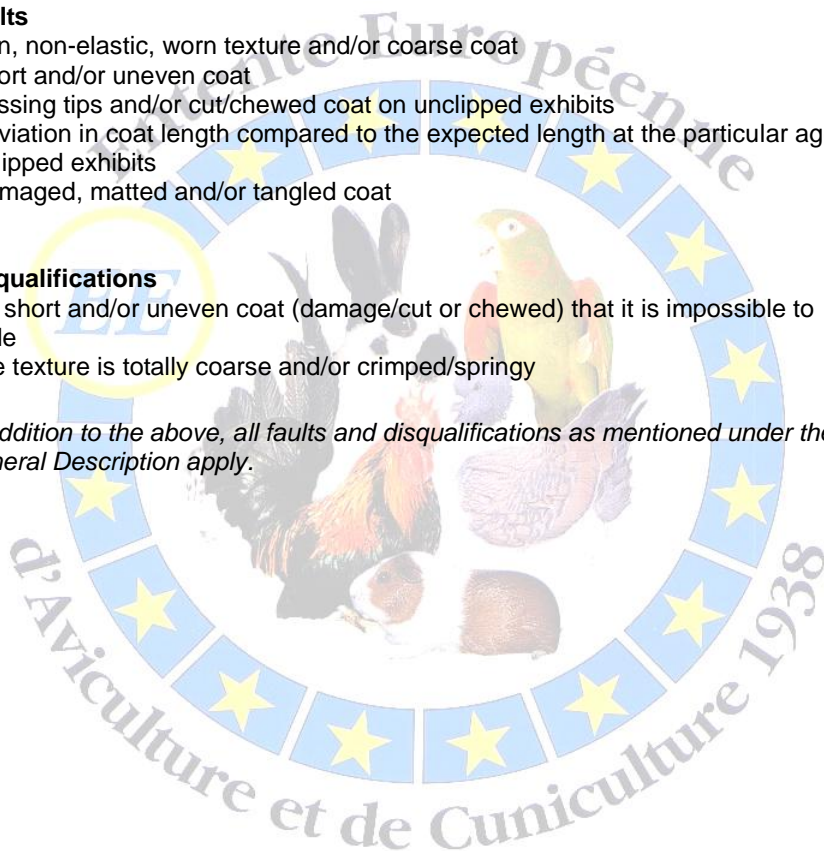
### Faults

- thin, non-elastic, worn texture and/or coarse coat
- short and/or uneven coat
- missing tips and/or cut/chewed coat on unclipped exhibits
- deviation in coat length compared to the expected length at the particular age on unclipped exhibits
- damaged, matted and/or tangled coat

### Disqualifications

- so short and/or uneven coat (damage/cut or chewed) that it is impossible to judge
- the texture is totally coarse and/or crimped/springy

*In addition to the above, all faults and disqualifications as mentioned under the General Description apply.*



# Coronet



## Introduction

The Coronet is a long coated cavy breed with a crest on its forehead. The head is smooth coated and the longer coat starts on the cheeks and between the ears from where it grows towards the sweep.

The body should be short, compact, low set with even height and broad shoulders. The Coronet may be presented with parting or with mane. The Coronet may be presented with parting or with the mane covering the parting.

## The Standard

1. Type and Shape	20
2. Head, Eyes and Ears	10
3. Colour and/or markings	10
4. Position, Shape and Centre of the Crest	15
5. Mane, Chops, Shoulders, Sides and Sweep	15
6. Coat Density and Texture	15
7. Condition and Presentation	15
	<u>100</u>

## 4. Position, Shape and Centre of the Crest

The crest is a rosette placed between eyes and ears. The crest should be symmetric, even and follow the shape of the head. The crest should give a balanced impression and radiate in all directions from a pinpoint centre between eyes and ears.

## 5. Mane, Chops Shoulders, Sides and Sweep

The longer coat starts between the ears, also called the mane, from where it grows towards the sweep. The chops which cover the cheeks and jaw line should be pronounced and strong with the hair all of one length. The coat of shoulders and sides should be even and harmonize with the length of the sweep.

## 6. Coat Density and Texture

The coat density should be even all around the body, and also from closest to the body and outwards to the tips. The coat texture should be soft, silky and give an elastic impression all over the body.

### Faults

- deviation in crest position, shape and or centre
- thin, non-elastic, worn texture and/or coarse coat
- short and/or uneven coat
- missing tips and/or cut/chewed coat on unclipped exhibits
- deviation in coat length compared to the expected length at the particular age on unclipped exhibits
- damaged, matted and/or tangled coat

### Disqualifications

- more than 1 centre of the crest
- so short and/or uneven coat (damage/cut or chewed) that it is impossible to judge
- the texture is totally coarse and/or crimped/springy

*In addition to the above, all faults and disqualifications as mentioned under the General Description apply.*



# Alpaca



## Introduction

The Alpaca is a long coated curly cavy breed with two rump rosettes parallel and close to each other. In front of these rosettes the coat should grow forwards and form a frontal.

The body should be short, compact, low set with even height and broad shoulders. The body shape and a good, dense frontal are very important features to give the Alpaca its powerful and round impression. The Alpaca is presented with parting and can be shown combed and uncombed.

## The Standard

1. Type and Shape	20
2. Head, Eyes and Ears	10
3. Colour and/or markings	10
4. Frontal and Chops	15
5. Shoulders, Sides and Sweep	15
6. Coat Density, Springiness, Texture and Crimping	15
7. Condition and Presentation	<u>15</u>
	100

## 4. Frontal and Chops

The frontal should cover the head when it is adult (approx. 4 month). The coat on the head is shorter and with crimped hairs standing straight out. The chops which cover the cheeks and jaw line should be pronounced and strong with the hair all of one length.



## 5. Shoulders, Sides and Sweep

Alpacas have two rump rosettes. The coat of shoulders and sides should be even and harmonize with the length of the sweep.

## 6. Coat Density, Springiness, Texture and Crimping

The coat density should be even all around the body, and also from closest to the body and outwards to the tips. The coat texture should be soft, crimped and springy and give an elastic impression all over the body. The coat on the belly and the whiskers should be curly.

### Faults

- thin, non-elastic, worn texture and/or coarse coat
- short and/or uneven coat
- missing tips and/or cut/chewed coat on unclipped exhibits
- deviation in coat length compared to the expected length at the particular age on unclipped exhibits
- lacking in springiness and/or crimping
- damaged, matted and/or tangled coat
- deviation in rosette placement

### Disqualifications

- so short and/or uneven coat (damage/cut or chewed) that it is impossible to judge
- extra rosettes
- the texture is totally coarse and/or totally straight texture

*In addition to the above, all faults and disqualifications as mentioned under the General Description apply.*



# Texel



## Introduction

The Texel is a long coated curly cavy breed. The head is short and crimped coated and the longer coat starts on the cheeks and between the ears from where it grows towards the sweep.

The body should be short, compact, low set with even height and broad shoulders. The body shape and a good, dense frontal are very important features to give the Texel its powerful and round impression. The Texel is presented with or without parting and can be shown combed and uncombed.

## The Standard

1. Type and Shape	20
2. Head, Eyes and Ears	10
3. Colour and/or markings	10
4. Mane and Chops	15
5. Shoulders, Sides and Sweep	15
6. Coat Density, Springiness, Texture and Crimping	15
7. Condition and Presentation	15
	<hr/>
	100

## 4. Mane and Chops

The coat on the head is shorter and with crimped hairs standing straight out. The longer coat starts between the ears, also called the mane, from where it grows towards the sweep. The chops which cover the cheeks and jaw line should be pronounced and strong with the hair all of one length.

## 5. Shoulders, Sides and Sweep

The coat of shoulders and sides should be even and harmonize with the length of the sweep.

## 6. Coat Density, Springiness, Texture and Crimping

The coat density should be even all around the body, and also from closest to the body and outwards to the tips. The coat texture should be soft, crimped and springy and give an elastic impression all over the body. The coat on the belly and the whiskers should be curly.

### Faults

- thin, non-elastic, worn texture and/or coarse coat
- short and/or uneven coat
- missing tips and/or cut/chewed coat on unclipped exhibits
- deviation in coat length compared to the expected length at the particular age on unclipped exhibits
- lacking in springiness and/or crimping
- damaged, matted and/or tangled coat

### Disqualifications

- so short and/or uneven coat (damage/cut or chewed) that it is impossible to judge
- the texture is totally coarse and/or totally straight texture
- too damaged, matted and/or tangled coat

*In addition to the above, all faults and disqualifications as mentioned under the General Description apply.*

# Merino



## Introduction

The Merino is a long coated curly cavy breed with a crest on its forehead. The head is smooth coated and the longer coat starts on the cheeks and between the ears from where it grows towards the sweep.

The body should be short, compact, low set with even height and broad shoulders. The Merino may be presented with parting or with mane. The Merino may be presented with parting or with the mane covering the parting and can be shown combed and uncombed.

## The Standard

1. Type and Shape	20
2. Head, Eyes and Ears	10
3. Colour and/or markings	10
4. Position, Shape and Centre of the Crest	15
5. Mane, Chops, Shoulders, Sides and Sweep	15
6. Coat Density, Springiness, Texture and Crimping	15
7. Condition and Presentation	<u>15</u>
	100

## 4. Position, Shape and Centre of the Crest

The crest is a rosette placed between eyes and ears. The crest should be symmetric, even and follow the shape of the head. The crest should give a balanced impression and radiate in all directions from a pinpoint centre between eyes and ears.



## 5. Mane, Chops Shoulders, Sides and Sweep

The longer coat starts between the ears, also called the mane, from where it grows towards the sweep. The chops which cover the cheeks and jaw line should be pronounced and strong with the hair all of one length. The coat of shoulders and sides should be even and harmonize with the length of the sweep.

## 6. Coat Density, Springiness, Texture and Crimping

The coat density should be even all around the body, and also from closest to the body and outwards to the tips. The coat texture should be soft, crimped and springy and give an elastic impression all over the body. The coat on the belly and the whiskers should be curly.

### Faults

- deviation in crest position, shape and or centre
- thin, non-elastic, worn texture and/or coarse coat
- short and/or uneven coat
- missing tips and/or cut/chewed coat on unclipped exhibits
- deviation in coat length compared to the expected length at the particular age on unclipped exhibits
- lacking in springiness and/or crimping
- damaged, matted and/or tangled coat

### Disqualifications

- more than 1 centre of the crest
- so short and/or uneven coat (damage/cut or chewed) that it is impossible to judge
- the texture is totally coarse and/or totally straight texture

*In addition to the above, all faults and disqualifications as mentioned under the General Description apply.*



## Lunkarya (Peruvian type)



### Introduction

The Lunkarya (Peruvian type) is a long coated cavy breed with two rump rosettes parallel and close to each other. In front of these rosettes the coat should grow forwards and form a frontal.

The body should be short, compact, low set with even height and broad shoulders. The body shape and a good, dense frontal are very important features to give the Lunkarya its powerful and round impression. The Lunkarya is presented with parting when combed and without parting when uncombed.

### The Standard

1. Type and Shape	20
2. Head, Eyes and Ears	10
3. Colour and/or markings	10
4. Frontal and Chops	15
5. Shoulders, Sides and Sweep	15
6. Coat Density, Texture and Waviness	15
7. Condition and Presentation	15
	<hr/>
	100

### 4. Frontal and Chops

The frontal should cover the head when it is adult (approx. 4 month). The coat on the head is shorter and with coarse wavy hairs standing straight out. The chops which cover the cheeks and jaw line should be pronounced and strong with the hair all of one length.

## 5. Shoulders, Sides and Sweep

Lunkarya have two rump rosettes. The coat of shoulders and sides should be even and harmonize with the length of the sweep.

## 6. Coat Density, Texture and Waviness

The coat density should be even all around the body, and also from closest to the body and outwards to the tips. The coat texture should be coarse and wavy and give an elastic impression all over the body.

### Faults

- thin, non-elastic, worn texture and/or coarse coat
- short and/or uneven coat
- missing tips and/or cut/chewed coat on unclipped exhibits
- deviation in coat length compared to the expected length at the particular age on unclipped exhibits
- lacking waviness
- damaged, matted and/or tangled coat
- deviation in rosette placement

### Disqualifications

- so short and/or uneven coat (damaged/cut or chewed) that it is impossible to judge
- extra rosettes
- the texture is totally soft and/or totally straight texture

**(NB – Important: The Lunkarya also exists as sheltie and coronet and all of them also in satin. These types are not Standardised)**

*In addition to the above, all faults and disqualifications as mentioned under the General Description apply.*

# Appendix I Updates Standard

## May 2017:

- Additions pos. 3 Smooth Coated, added: “The lie of the coat is horizontal and runs from the head towards the hindquarters”. Added to faults: “slight skirting behind front legs”. Added to Disqualifications: “quiffs and severe skirting in coat”.
- Changed Text for Solid agoutis. Removed: “Dark feet are currently tolerated”,
- Addition General faults Selfs, added: “any shading of skin on body, ears and/or pads”.
- Removed Text “without any pigmentation” under colours Golden DE, Golden PE, White DE and White PE under description Ears and Pads.
- Changed Text pos. 6 Dalmation and Roan.
- Changed Text for Satin and added standard for Crested Satin.
- Added Text “Peruvians have 2 rump rosettes.” pos. 5 Peruvian.
- Added Text “Alpacas have 2 rump rosettes.” pos. 5 Alpaca.
- Added Text “Lunkaryas have 2 rump rosettes.” pos. 5 Lunkarya.
- Added New standard for variety “Dapple”.

## May 2018:

- Changed description Himilayan and Californian
- Changed pos. 6 Undercolour on all Selfs

## May 2019:

- Added new Coffee
- Small change in position 4 and 5 Dapple
- Changed positions 4, 5 and 6 Rex
- Changed positions 4, 5 and 6 US-Teddy
- Changed positions 4, 5 and 6 CH-Teddy (Swiss teddy)
- Created Appendix II Recommendation Skinny